

ABBYY®

1.				3
1.1.				3
2.				4
2.1.				4
2.2.				4
3.				6
3.1.				5
	%			
3.1.1.				8
3.2.		(%),	9
3.2.1.		(%),	11
3.3.				13
	%			
3.3.1.				14
3.4.		(%),	15
3.4.1.		(%)	16
	,			
4.				17
4.1.				17
4.2.				17
4.3.				20
4.4.				20

1.

1.1 Общие характеристики проведённой работы

1

07/9/2016 - 21/9/2016 .

- ,

76

7.68

17

45%

2.

2.1.

	-	.	%
" 3"	76	7.68	45%
	388	9.35	55%
" "	10903	8.95	53%
	14976	9.28	55%

2.2.

	-	.	%
9	27	8.33	49%
9	22	7.55	44%
9	27	7.15	42%
" 3"	76	7.68	45%

3.1.

%

		.% .
6.10		78%
6.7	(- -/- -)	78%
6.8	- - - -	78%
6.1		76%
7.18		76%
8.4	, ,	76%
8.6	-	76%
9.2		76%
9.3	()	76%
9.4	()	76%
8.1	.	73%
2.2	. .	52%
2.4		52%
6.16	, ,	41%
6.6		41%
7.8	,	39%
10.1		38%
5.13		35%
5.7		34%
7.2		34%
7.3		34%
7.4		34%

7.5		34%
7.7	()	34%
7.19		32%
5.1		32%
5.2	()	27%
5.8		12%
7.11		12%
7.12		12%

3.1.1.

		9	9	9
2.2		45%	36%	70%
2.4		45%	36%	70%
5.1		26%	64%	11%
5.2	()	35%	22%	23%
5.7		44%	30%	28%
5.8		19%	0%	15%
5.13		38%	32%	34%
6.1		77%	76%	76%
6.6		48%	50%	26%
6.7	(- -/ -)	82%	64%	85%
6.8	- - - -	82%	64%	85%
6.10		82%	64%	85%
6.16	, ,	48%	50%	26%
7.2		44%	30%	28%
7.3		44%	30%	28%
7.4		44%	30%	28%
7.5		44%	30%	28%
7.7	()	44%	30%	28%
7.8	,	45%	50%	24%
7.11		19%	0%	15%
7.12		19%	0%	15%
7.18		77%	76%	76%
7.19		39%	32%	24%
8.1		76%	72%	71%
8.4	, ,	77%	76%	76%

3.1.1.

		9	9	9
8.6	-	77%	76%	76%
9.2		77%	76%	76%
9.3	()	77%	76%	76%
9.4	()	77%	76%	76%
10.1		45%	27%	41%

3.2.

(%

),

		. % .
		76%
9.4	()	76%
9.3	()	76%
9.2		76%
		75%
8.6	-	76%
8.4	,	76%
8.1	.	73%
		65%
6.10		78%
6.8	- - - -	78%
6.7	-/- -) (-	78%
6.1		76%
6.16	,	41%
6.6		41%
		52%
2.4		52%
2.2	.	52%
		38%
10.1		38%
		34%
7.18		76%
7.8	,	39%

		. % .
7.7	()	34%
7.5		34%
7.4		34%
7.3		34%
7.2		34%
7.19		32%
7.12		12%
7.11		12%
.		28%
5.13		35%
5.7		34%
5.1		32%
5.2	. () .	27%
5.8		12%

3.2.1.

(%),

			9	9	9
	2.2		45%	36%	70%
	2.4		45%	36%	70%
	5.1		26%	64%	11%
	5.2	()	35%	22%	23%
	5.7		44%	30%	28%
	5.8		19%	0%	15%
	5.13		38%	32%	34%
	6.1		77%	76%	76%
	6.6		48%	50%	26%
	6.7	(- -/ - -)	82%	64%	85%
	6.8	- - - -	82%	64%	85%
	6.10		82%	64%	85%
	6.16	, ,	48%	50%	26%
	7.2		44%	30%	28%
	7.3		44%	30%	28%
	7.4		44%	30%	28%
	7.5		44%	30%	28%
	7.7	()	44%	30%	28%
	7.8	,	45%	50%	24%
	7.11		19%	0%	15%
	7.12		19%	0%	15%
	7.18		77%	76%	76%
	7.19		39%	32%	24%
	8.1	.	76%	72%	71%
	8.4	, ,	77%	76%	76%
	8.6	-	77%	76%	76%
	9.2		77%	76%	76%

			9	9	9
	9.3	()	77%	76%	76%
	9.4	()	77%	76%	76%
	10.1		45%	27%	41%

3.3.

%

		.% .
3.1	(, ,)	76%
3.3	, ,	76%
3.5	(, , , , .)	76%
3.6	: , ,	76%
3.8		76%
3.9	(,)	76%
3.10	; , , , ;	76%
2.1	(,) ,	73%
2.4		73%
2.3	(, ,) ,	70%
1.3	, , , , -	52%
1.1	,	35%

3.3.1.

		9	9	9
1.1	,	41%	35%	29%
1.3	' , ' - ' ,	45%	36%	70%
2.1	(,)	76%	72%	71%
2.3	() , ' ,	74%	68%	67%
2.4		76%	72%	71%
3.1) (, ' ,	77%	76%	76%
3.3		77%	76%	76%
3.5	' (, ,) , ' ,	77%	76%	76%
3.6	:	77%	76%	76%
3.8		77%	76%	76%
3.9	() ,	77%	76%	76%
3.10	;	77%	76%	76%

3.4.

(%

),

		.% .
		76%
3.10	; , , ;	76%
3.9	(,)	76%
3.8		76%
3.6	: , ,	76%
3.5	(, , , , , .)	76%
3.3	, ,	76%
3.1	(, ,)	76%
		72%
2.4		73%
2.1	(,) ,	73%
2.3	(,) ,	70%
		36%
1.3	, , , -	52%
1.1	,	35%

3.4.1.

(%) ,

			9	9	9
	1.1	,	41%	35%	29%
	1.3	, , - ,	45%	36%	70%
	2.1	(, ,)	76%	72%	71%
	2.3	() , ,	74%	68%	67%
	2.4		76%	72%	71%
	3.1) (, ,	77%	76%	76%
	3.3	, ,	77%	76%	76%
	3.5	, (, , .)	77%	76%	76%
	3.6	: , ,	77%	76%	76%
	3.8		77%	76%	76%
	3.9	() ,	77%	76%	76%
	3.10	, ; , , ;	77%	76%	76%

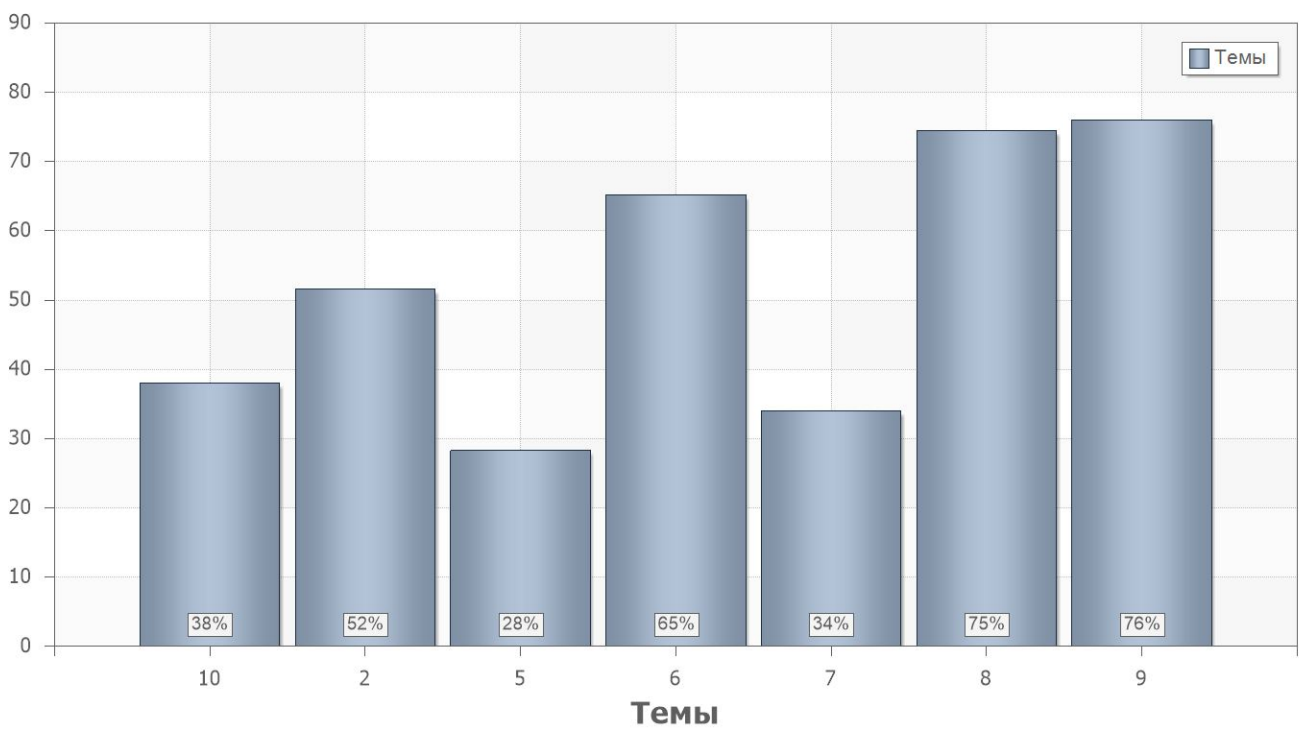
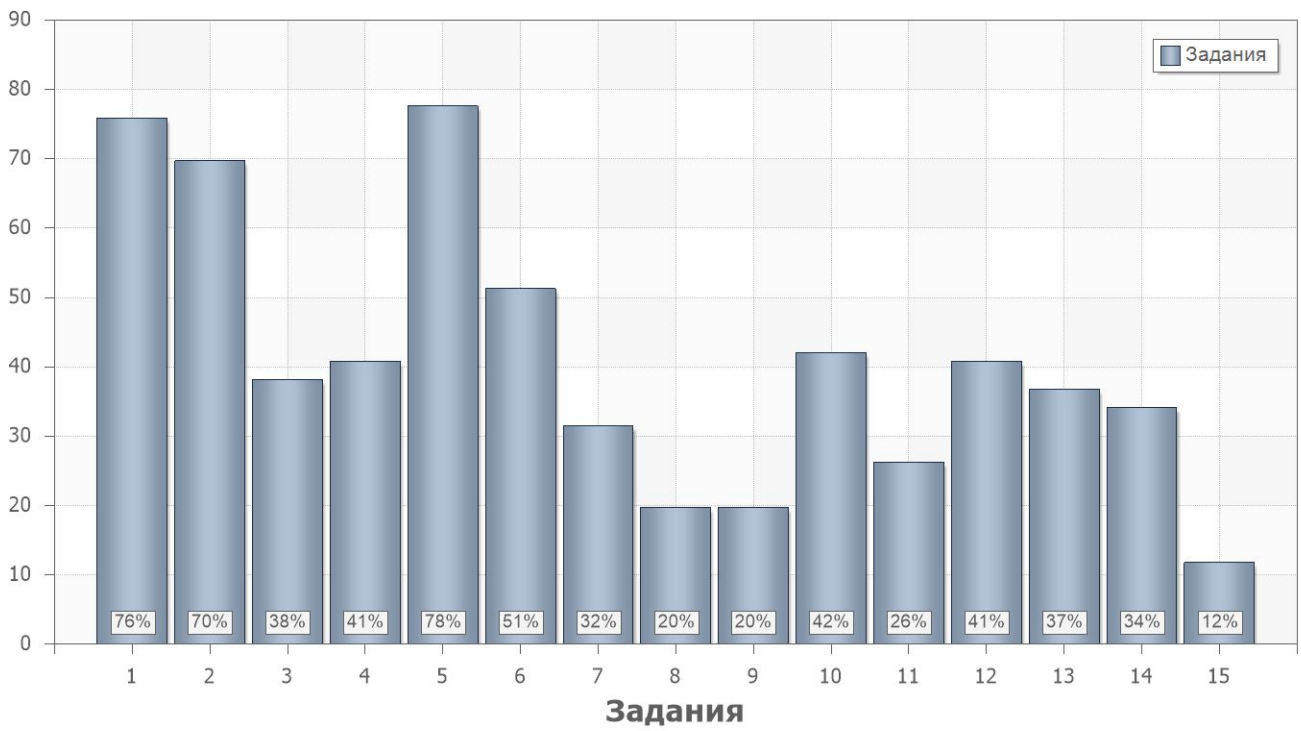
4.

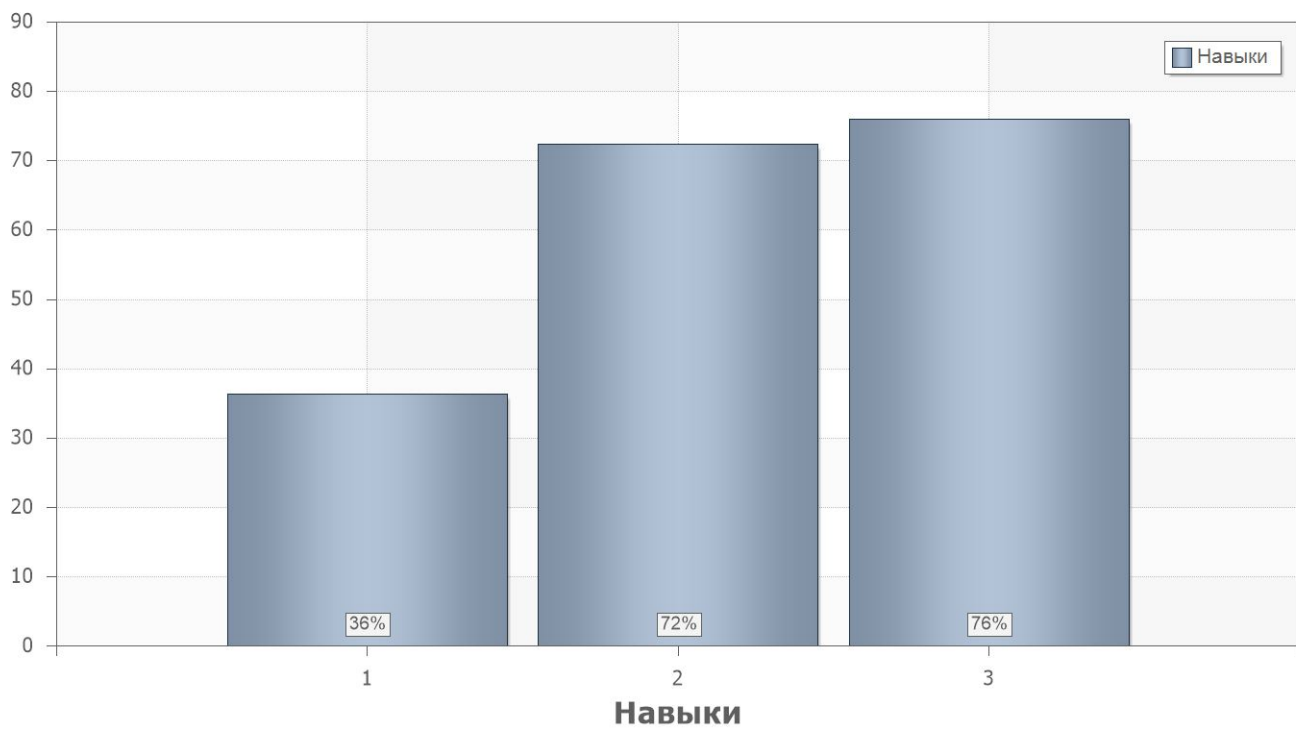
4.1.

	. % .
1	40
2	51

4.2.

	. % .		
1			
1	76	11;6.1;8.1;8.4;8.6;9.2;9.3;9.4;7.18	2.1;2.4;3.1;3.3;3.5;3.6;3.8;3.9;3.10
2	70	8.1	2.1;2.3;2.4
3	38	10.1	1.1
4	41	6.6;6.16	1.1
5	78	6.7;6.8;6.10	1.1
6	51	2.2;2.4	1.3
7	32	5.1	1.1
8	20	5.2	1.1
9	20	5.2	1.1
10	42	5.2;5.7;7.2;7.3;7.4;7.5;7.7;7.19	1.1
11	26	5.2;5.7;7.2;7.3;7.4;7.5;7.7;7.19	1.1
12	41	7.8;7.19	1.1
13	37	7.8;7.19	1.1
14	34	5.13	1.1
15	12	5.8;7.11;7.12;7.19	1.1





4.3.

Name	9	9	9
1	46%	35%	38%
2	52%	54%	47%

4.4.

PartIndex	Number	9	9	9
1	1	77%	76%	75%
	2	74%	68%	67%
	3	44%	27%	41%
	4	48%	50%	26%
	5	81%	64%	85%
	6	44%	36%	70%
	7	26%	64%	11%
	8	30%	0%	26%
	9	22%	27%	11%
	10	44%	41%	41%
	11	44%	18%	15%
	12	48%	45%	30%
	13	41%	55%	19%
	14	37%	32%	33%
	15	19%	0%	15%