

**ABBYY®**

1.				3
1.1.				3
2.				4
2.1.				4
2.2.				4
3.				6
3.1.				5
	%			
3.1.1.				8
3.2.		(%	),	9
3.2.1.		(%	),	11
3.3.				13
	%			
3.3.1.				14
3.4.		(%	),	15
3.4.1.		(%	)	16
	,			
4.				17
4.1.				17
4.2.				17
4.3.				21
4.4.				21

# 1.

## 1.1 Общие характеристики проведённой работы

2

07/9/2016 - 21/9/2016 .

- ,

48

20.92

38

55%

## 2.

### 2.1.

	-	.	%
" 3"	48	20.92	55%
	275	21.71	57%
" "	5989	20.77	55%
	8443	22.26	59%

### 2.2.

	-	.	%
11	20	23.00	61%
11	28	19.43	51%
" 3"	48	20.92	55%

### 3.1.

%

		.% .
6.7	( - -/ - -)	77%
8.6	-	77%
6.6		71%
6.10		67%
6.16	, ,	67%
2.1		64%
9.2		63%
8.2		60%
6.11		60%
6.13		60%
2.2	. .	56%
2.3		56%
2.4		56%
2.5		56%
7.18		56%
7.2		56%
7.12		54%
9.1		54%
10.5		52%
9.3	( )	50%
6.5		46%
7.8	,	44%

9.4	( )	43%
6.8	- - - -	33%
8.3	-	31%
7.7	( )	25%
8.1	.	19%
7.13		13%
7.15		13%

### 3.1.1.

		11	11
2.1		70%	59%
2.2		65%	50%
2.3		65%	50%
2.4		65%	50%
2.5		65%	50%
6.5		40%	50%
6.6		80%	64%
6.7	( - -/ - - )	85%	71%
6.8	- - - -	35%	32%
6.10		90%	50%
6.11		55%	64%
6.13		55%	64%
6.16	, ,	80%	57%
7.2		50%	61%
7.7	( )	20%	29%
7.8	,	40%	46%
7.12		50%	57%
7.13		20%	7%
7.15		20%	7%
7.18		50%	61%
8.1	.	20%	18%
8.2		55%	64%
8.3	-	45%	21%
8.6	-	85%	71%
9.1		70%	43%

**3.1.1.**

		<b>11</b>	<b>11</b>
9.2		75%	54%
9.3	( )	55%	46%
9.4	( )	44%	43%
10.5		65%	42%



## 3.2.

(%

),

		. % .
		<b>60%</b>
6.7	-/- -) ( -	77%
6.6		71%
6.16	, ,	67%
6.10		67%
6.13		60%
6.11		60%
6.5		46%
6.8	- - - -	33%
		<b>59%</b>
2.1		64%
2.5		56%
2.4		56%
2.3		56%
2.2	. .	56%
		<b>53%</b>
9.2		63%
9.1		54%
9.3	( )	50%
9.4	( )	43%
		<b>52%</b>
10.5		52%
		<b>50%</b>
8.6	-	77%
8.2		60%

		.% .
8.3	-	31%
8.1	.	19%
		<b>37%</b>
7.18		56%
7.2		56%
7.12		54%
7.8	,	44%
7.7	( )	25%
7.15		13%
7.13		13%

**3.2.1.**

(% ),

			11	11
	2.1		70%	59%
	2.2		65%	50%
	2.3		65%	50%
	2.4		65%	50%
	2.5		65%	50%
	6.5		40%	50%
	6.6		80%	64%
	6.7	( - -/- - )	85%	71%
	6.8	- - - -	35%	32%
	6.10		90%	50%
	6.11		55%	64%
	6.13		55%	64%
	6.16		80%	57%
	7.2		50%	61%
	7.7	( )	20%	29%
	7.8		40%	46%
	7.12		50%	57%
	7.13		20%	7%
	7.15		20%	7%
	7.18		50%	61%
	8.1		20%	18%
	8.2		55%	64%
	8.3	-	45%	21%
	8.6	-	85%	71%
	9.1		70%	43%
	9.2		75%	54%
	9.3	( )	55%	46%
	9.4	( )	44%	43%

			<b>11</b>	<b>11</b>
	10.5		65%	42%

**3.3.**

%

		.% .
3.1	- , - ( ;	77%
3.2	' , ;	77%
3.3		77%
3.4	, D53	77%
2.3		63%
1.4	, , - ,	56%
2.1	, - ( .) -	55%
1.2	; ,	52%
1.3	,	52%
1.1	,	51%
2.2	: - , ;	48%

### 3.3.1.

		11	11
1.1		56%	48%
1.2		65%	42%
1.3		65%	42%
1.4		59%	54%
2.1		63%	50%
2.2		59%	41%
2.3		79%	52%
3.1		85%	71%
3.2		85%	71%
3.3		85%	71%
3.4	, D53	85%	71%

**3.4. (%, ),**

		.% .
		77%
3.4	, D53	77%
3.3		77%
3.2	, ;	77%
3.1	- , - , ( ;	77%
		55%
2.3		63%
2.1	, - ( .) -	55%
2.2	: - ,	48%
		52%
1.4	, , - ,	56%
1.3	,	52%
1.2	; ,	52%
1.1	,	51%

3.4.1.

(% ) ,

			11	11
	1.1	,	56%	48%
	1.2	;	65%	42%
	1.3	,	65%	42%
	1.4	- , ,	59%	54%
	2.1	- .) ( - ,	63%	50%
	2.2	, , : -	59%	41%
	2.3		79%	52%
	3.1	- , - ( , ) ;	85%	71%
	3.2	;	85%	71%
	3.3		85%	71%
	3.4	, D53	85%	71%



## 4.

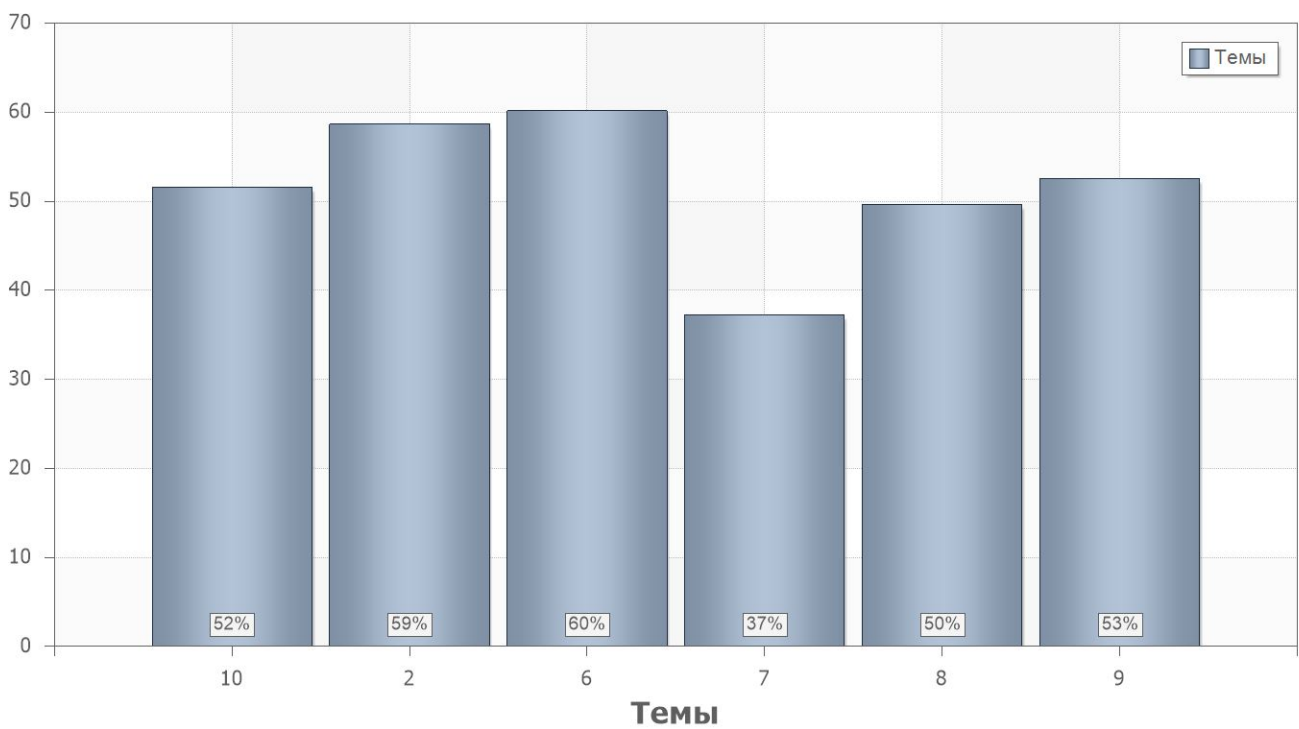
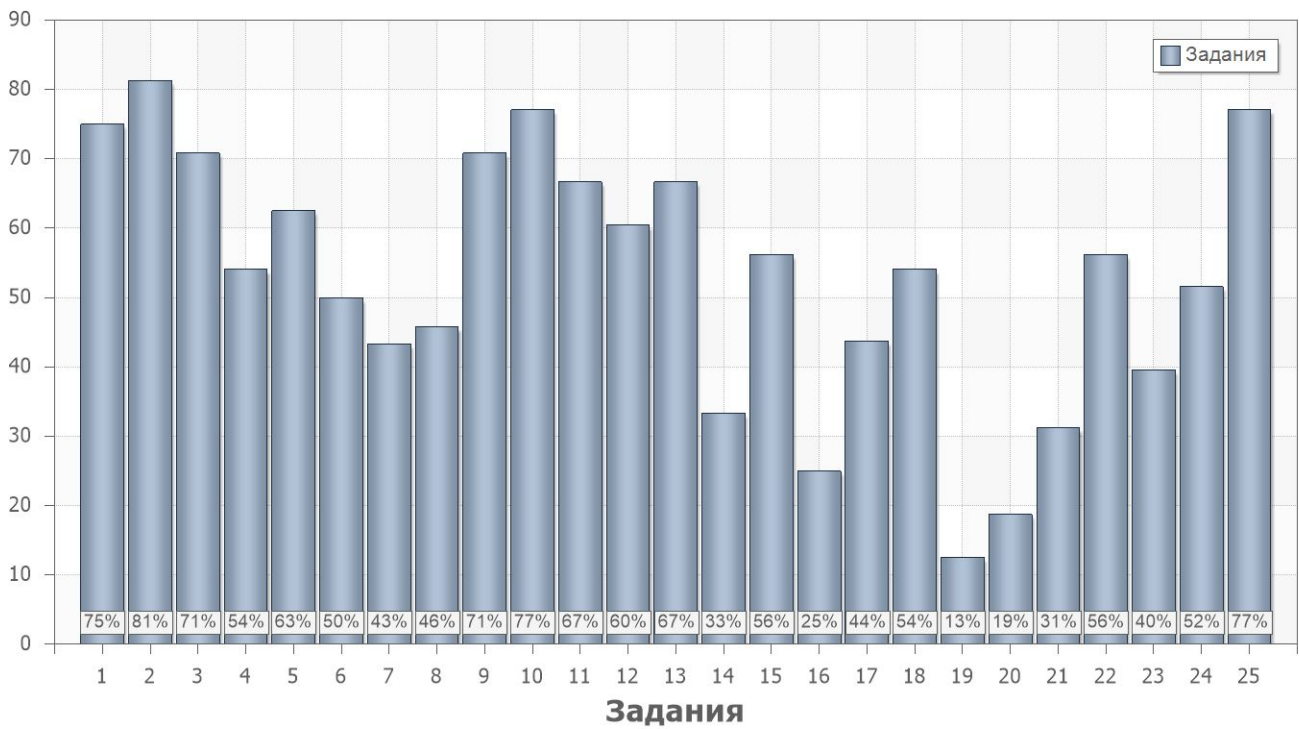
### 4.1.

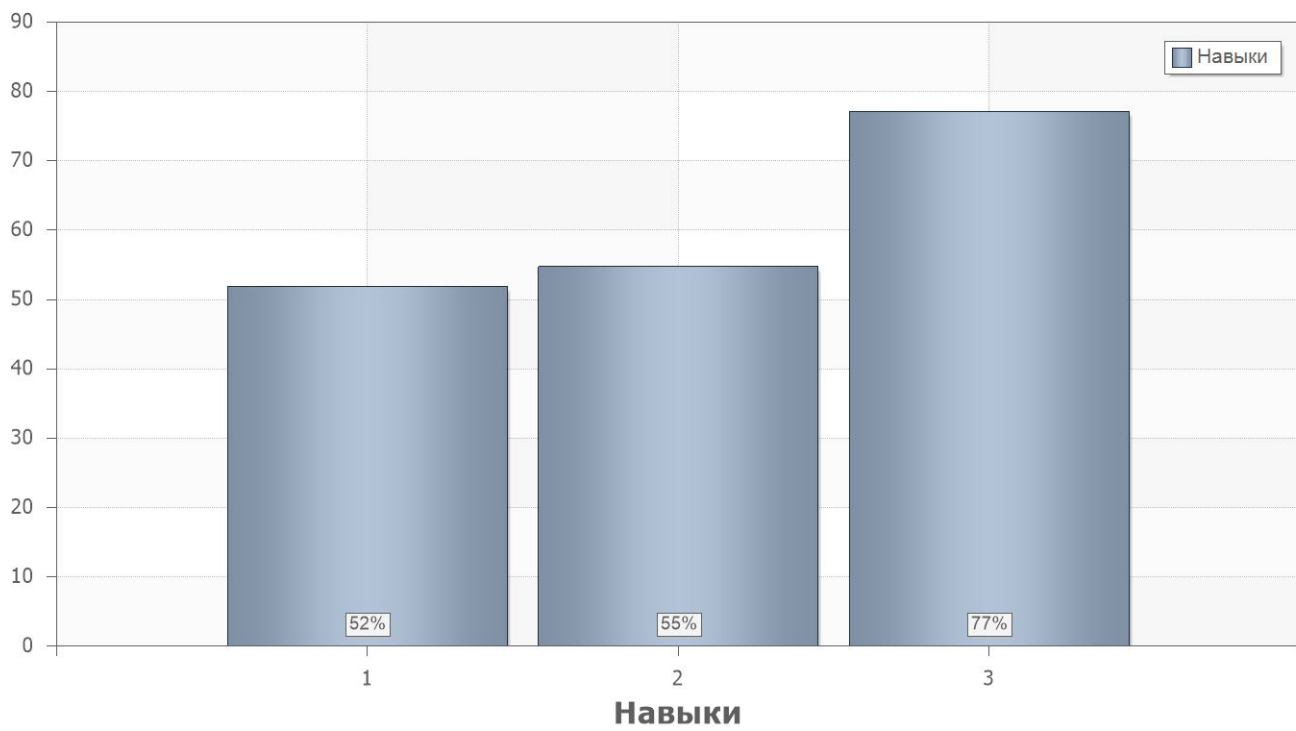
	. % .
2	56
1	54

### 4.2.

	. % .		
<b>1</b>			
1	75	11	2.1;2.2;2.3
2	81	8.2	1.4;2.1
3	71	2.1	1.1;1.4;2.1
4	54	9.1	1.1
5	63	9.2	1.1
6	50	9.3	1.1
7	43	9.4	1.1
8	46	6.5	1.1
9	71	6.6	1.1
10	77	6.7	1.1
11	67	6.10	1.1
12	60	6.11;6.13	1.1
13	67	6.16	1.1
14	33	6.8	1.1
15	56	7.2;7.18	1.1
16	25	7.7	1.1
17	44	7.8	1.1
18	54	7.12	1.1
19	13	7.13;7.15	1.1

	. % .		
20	19	8.1	2.1;2.2
21	31	8.3	1.1;1.4;2.1
22	56	2.1;2.2;2.3;2.4;2.5	1.1;1.4;2.1
23	40	8.2	1.1;1.4
24	52	10.5	1.1;1.2;1.3;2.1;2.2;2.3
<b>2</b>			
25	77	11;8.6	3.1;3.2;3.3;3.4





### 4.3.

Name	11	11
1	62%	48%
2	59%	54%

### 4.4.

PartIndex	Number	11	11
1	1	93%	63%
	2	75%	86%
	3	75%	68%
	4	70%	43%
	5	75%	54%
	6	55%	46%
	7	44%	43%
	8	40%	50%
	9	80%	64%
	10	85%	71%
	11	90%	50%
	12	55%	64%
	13	80%	57%
	14	35%	32%
	15	50%	61%
	16	20%	29%
	17	40%	46%
	18	50%	57%
	19	20%	7%
	20	20%	18%
	21	45%	21%
	22	65%	50%
	23	35%	43%
	24	65%	42%
2	25	85%	71%