

ABBYY®

1.				3
1.1.				3
2.				4
2.1.				4
2.2.				4
3.				6
3.1.				5
	%			
3.1.1.				8
3.2.		(%),	9
3.2.1.		(%),	11
3.3.				13
	%			
3.3.1.				14
3.4.		(%),	15
3.4.1.		(%)	16
	,			
4.				17
4.1.				17
4.2.				17
4.3.				21
4.4.				21

1.

1.1 Общие характеристики проведённой работы

1

13/9/2016 - 30/9/2016 .

- ,

73

14.04

26

54%

2.

2.1.

	-	.	%
" 3"	73	14.04	54%
	337	14.59	56%
" "	9794	14.57	56%
	13484	14.95	57%

2.2.

	-	.	%
9	24	15.63	60%
9	22	11.50	44%
9	27	14.70	57%
" 3"	73	14.04	54%

3.1.

%

		.% .
1.4		69%
1.5	.	69%
1.6	(, ,)	69%
1.7	.	69%
1.8	,	69%
4.4		67%
4.5	.	67%
4.6		67%
4.7		67%
4.1		63%
4.2	.	63%
4.3		63%
1.1		60%
1.2		60%
1.3	,	60%
2.2		55%
3.1	,	48%
3.2	, ,	48%
3.3		48%
3.4	, .	48%
3.5	,	48%
3.6		48%

3.10		47%
3.11	,	47%
3.12		47%
3.7	.	47%
3.8		47%
3.9		47%
2.3	.	40%
2.1		39%
2.4	, ,	39%
2.5	. . ,	39%
1.0		37%
2.0		37%
3.0		37%
4.0		37%

3.1.1.

		9	9	9
1.0		47%	22%	41%
1.1		66%	55%	58%
1.2		66%	55%	58%
1.3		66%	55%	58%
1.4		69%	61%	74%
1.5		69%	61%	74%
1.6	(, ,)	69%	61%	74%
1.7		69%	61%	74%
1.8		69%	61%	74%
2.0		47%	22%	41%
2.1		41%	40%	35%
2.2		53%	58%	54%
2.3		43%	34%	42%
2.4		41%	40%	35%
2.5		41%	40%	35%
3.0		47%	22%	41%
3.1		57%	34%	52%
3.2		57%	34%	52%
3.3		57%	34%	52%
3.4		57%	34%	52%
3.5		57%	34%	52%
3.6		57%	34%	52%
3.7		50%	34%	54%

3.1.1.

		9	9	9
3.8		50%	34%	54%
3.9		50%	34%	54%
3.10		50%	34%	54%
3.11		50%	34%	54%
3.12		50%	34%	54%
4.0		47%	22%	41%
4.1		70%	54%	64%
4.2		70%	54%	64%
4.3		70%	54%	64%
4.4		72%	60%	68%
4.5		72%	60%	68%
4.6		72%	60%	68%
4.7		72%	60%	68%

3.2.

(%

),

		. % .
		60%
1.8	,	69%
1.7	.	69%
1.6) (, ,	69%
1.5	.	69%
1.4		69%
1.3	,	60%
1.2		60%
1.1		60%
1.0		37%
		60%
4.7		67%
4.6		67%
4.5	.	67%
4.4		67%
4.3		63%
4.2	.	63%
4.1		63%
4.0		37%
		46%
3.6		48%
3.5	,	48%
3.4	,	48%
3.3		48%

		. % .
3.2	,	48%
3.1	,	48%
3.12		47%
3.11	,	47%
3.10		47%
3.9		47%
3.8		47%
3.7	.	47%
3.0		37%
		41%
2.2		55%
2.3	.	40%
2.5	. . ,	39%
2.4	,	39%
2.1		39%
2.0		37%

3.2.1.

(%),

			9	9	9
	1.0		47%	22%	41%
	1.1		66%	55%	58%
	1.2		66%	55%	58%
	1.3	,	66%	55%	58%
	1.4		69%	61%	74%
	1.5	.	69%	61%	74%
	1.6	(, ,)	69%	61%	74%
	1.7	.	69%	61%	74%
	1.8	,	69%	61%	74%
	2.0		47%	22%	41%
	2.1		41%	40%	35%
	2.2		53%	58%	54%
	2.3	.	43%	34%	42%
	2.4	, ,	41%	40%	35%
	2.5	.	41%	40%	35%
	3.0	,	47%	22%	41%
	3.1	,	57%	34%	52%
	3.2	, ,	57%	34%	52%
	3.3		57%	34%	52%
	3.4	,	57%	34%	52%
	3.5	,	57%	34%	52%
	3.6	,	57%	34%	52%
	3.7	.	50%	34%	54%
	3.8	.	50%	34%	54%
	3.9	.	50%	34%	54%
	3.10		50%	34%	54%
	3.11	,	50%	34%	54%
	3.12		50%	34%	54%

			9	9	9
	4.0		47%	22%	41%
	4.1		70%	54%	64%
	4.2		70%	54%	64%
	4.3		70%	54%	64%
	4.4		72%	60%	68%
	4.5		72%	60%	68%
	4.6		72%	60%	68%
	4.7		72%	60%	68%

3.3.

%

		.% .
2.1	;	67%
2.6	,	60%
1.2	/	55%
1.3	/	55%
1.1	/	47%
2.3	(,)	42%
2.2	;	41%
2.7	(,)	32%

3.3.1.

		9	9	9
1.1	/	56%	39%	44%
1.2	/	63%	47%	54%
1.3	/	63%	47%	54%
2.1	;	73%	55%	71%
2.2	;	49%	23%	47%
2.3	(52%	31%	42%
2.6	,	58%	58%	64%
2.7	(44%	20%	32%

3.4.

(%),

		.% .
/ :		53%
1.3	/	55%
1.2	/	55%
1.1	/ ,	47%
:		51%
2.1	; ; ' -	67%
2.6	,	60%
2.3	(,) , ' ,	42%
2.2	; ,	41%
2.7	(,)	32%

3.4.1.

(%) ,

			9	9	9
/ :	1.1	/ ,	56%	39%	44%
	1.2	/	63%	47%	54%
	1.3	/	63%	47%	54%
:	2.1	; - ' ;	73%	55%	71%
	2.2	; ' ;	49%	23%	47%
	2.3	(, ,) ,	52%	31%	42%
	2.6	,	58%	58%	64%
	2.7	(,)	44%	20%	32%

4.

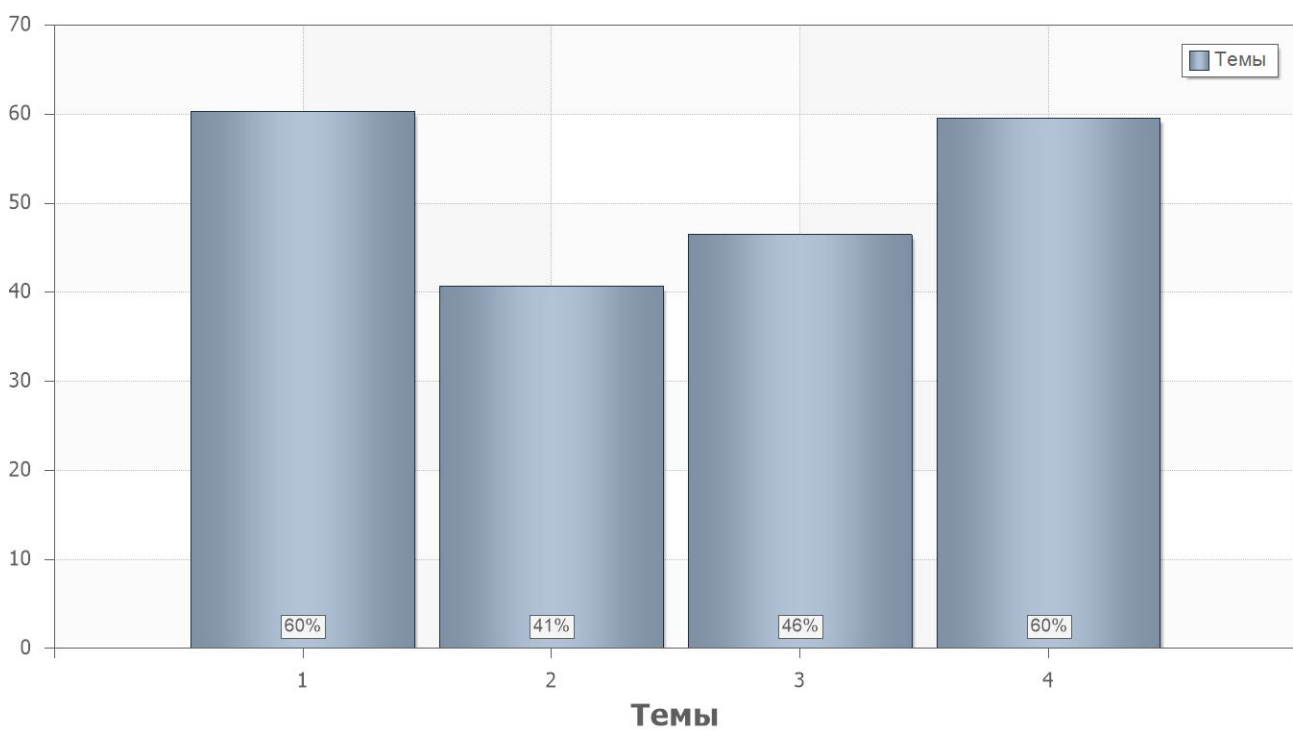
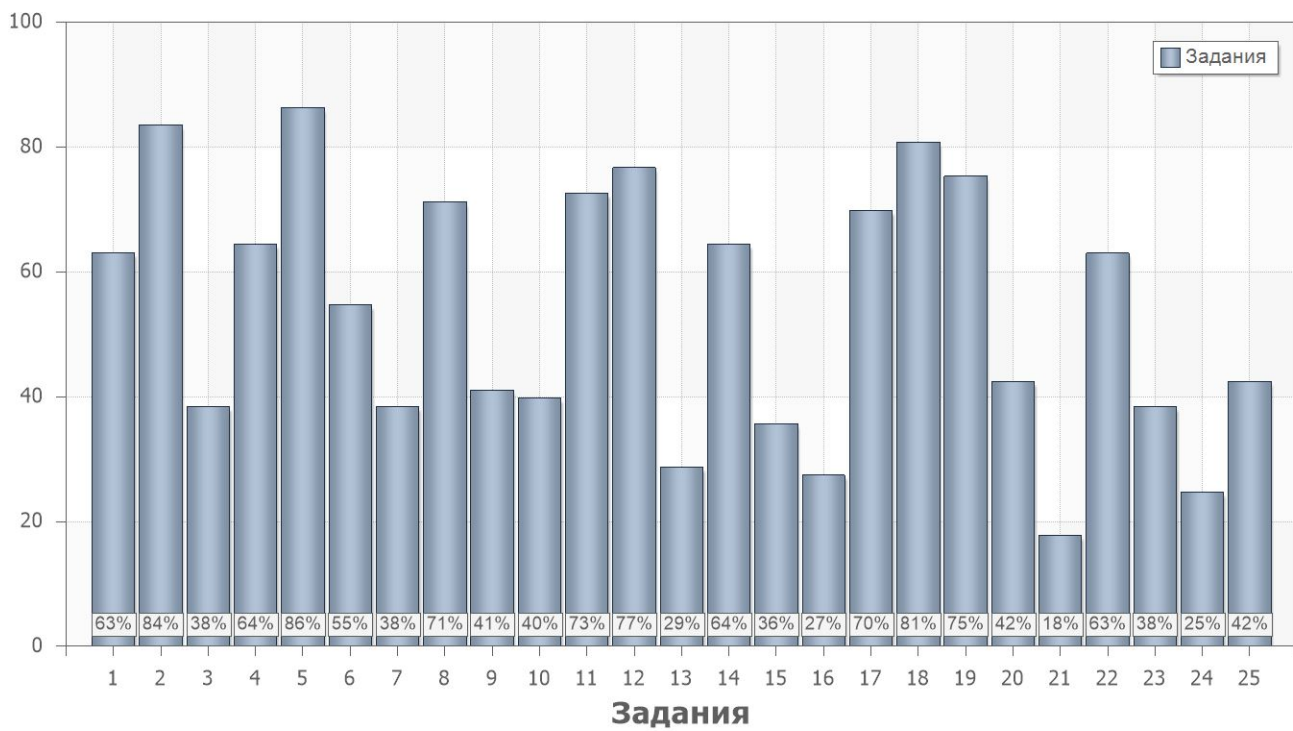
4.1.

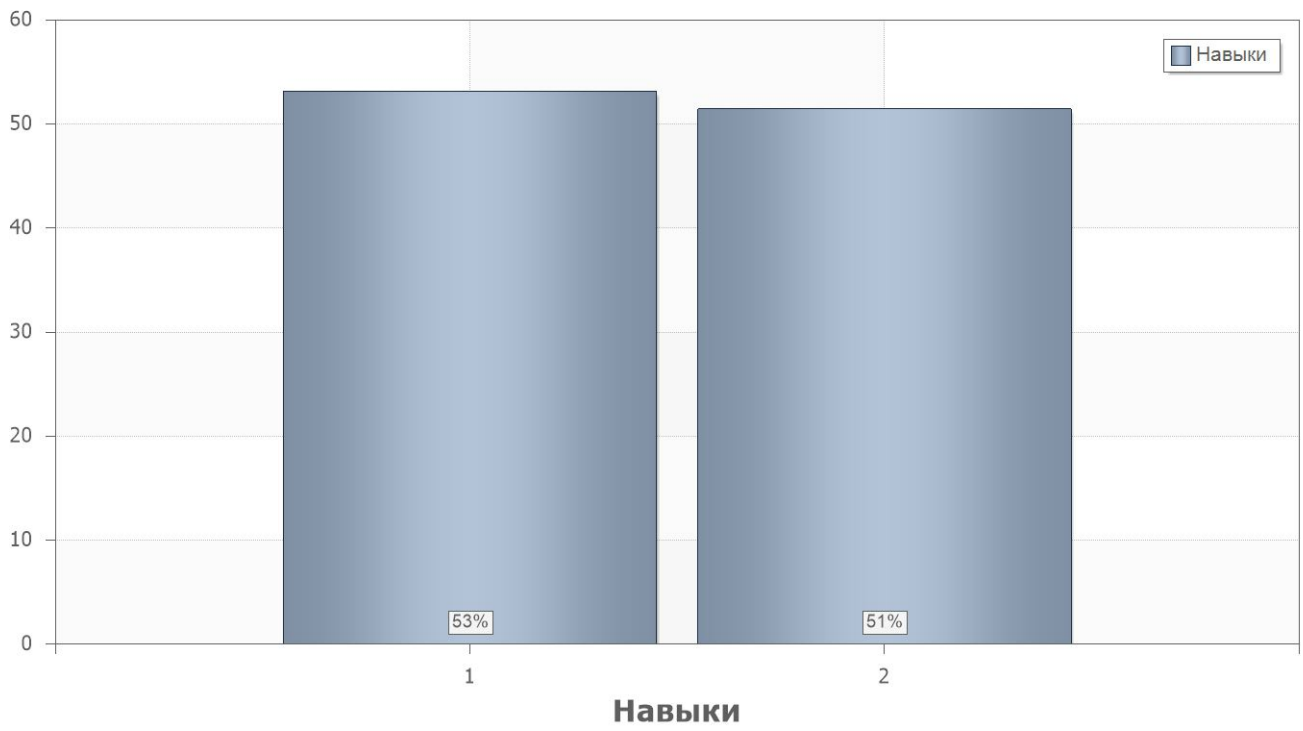
	. % .
2	57
1	51

4.2.

	. % .		
1			
1	63	1.1;1.2;1.3	1.2;1.3;2.1
2	84	1.1;1.2;1.3	2.6
3	38	1.1;1.2;1.3	1.1;1.2;1.3;2.3
4	64	1.4;1.5;1.6;1.7;1.8	1.2;1.3;2.1
5	86	1.4;1.5;1.6;1.7;1.8	2.6
6	55	1.1;1.2;1.3;1.4;1.5;1.6;1.7; 1.8	1.1;1.2;1.3;2.3
7	38	2.1;2.4;2.5	2.1;2.6
8	71	2.2	2.1
9	41	2.3	2.6
10	40	2.1;2.2;2.3;2.4;2.5	2.3
11	73	3.1;3.2;3.3;3.4;3.5;3.6	2.1
12	77	3.7;3.8;3.9;3.10;3.11;3.12	2.1
13	29	3.1;3.2;3.3;3.4;3.5;3.6;3.7; 3.8;3.9;3.10;3.11;3.12	2.3
14	64	3.1;3.2;3.3;3.4;3.5;3.6;3.7; 3.8;3.9;3.10;3.11;3.12	2.3
15	36	3.7;3.8;3.9;3.10;3.11;3.12	2.6
16	27	3.1;3.2;3.3;3.4;3.5;3.6;3.7; 3.8;3.9;3.10;3.11;3.12	2.3
17	70	4.1;4.2;4.3	2.1
18	81	4.4;4.5;4.6;4.7	2.1

	. % .		
19	75	4.1;4.2;4.3;4.4;4.5;4.6;4.7	2.6
20	42	4.1;4.2;4.3;4.4;4.5;4.6;4.7	2.3
21	18	1.0;2.0;3.0;4.0	2.2
22	63	1.0;2.0;3.0;4.0	2.2;2.3
23	38	1.0;2.0;3.0;4.0	2.3;2.7
24	25	1.0;2.0;3.0;4.0	2.3;2.7
25	42	1.0;2.0;3.0;4.0	2.2;2.3





4.3.

Name	9	9	9
1	56%	42%	53%
2	63%	46%	60%

4.4.

PartIndex	Number	9	9	9
1	1	71%	59%	59%
	2	83%	86%	81%
	3	54%	36%	26%
	4	71%	55%	67%
	5	79%	86%	93%
	6	58%	41%	63%
	7	50%	36%	30%
	8	75%	73%	67%
	9	54%	23%	44%
	10	33%	45%	41%
	11	79%	59%	78%
	12	88%	45%	93%
	13	42%	18%	26%
	14	75%	45%	70%
	15	13%	45%	48%
	16	33%	14%	33%
	17	75%	50%	81%
	18	79%	68%	93%
	19	71%	68%	85%
	20	63%	41%	26%
	21	25%	5%	22%
	22	79%	45%	63%
	23	54%	14%	44%
	24	33%	23%	19%
	25	46%	23%	56%