

**ABBYY®**

1.				3
1.1.				3
2.				4
2.1.				4
2.2.				4
3.				6
3.1.				5
		%		
3.1.1.				8
3.2.			(% ,)	9
3.2.1.			(% ,)	11
3.3.				13
		%		
3.3.1.				14
3.4.			(% ,)	15
3.4.1.			(% )	16
			,	
4.				17
4.1.				17
4.2.				17
4.3.				21
4.4.				21

# 1.

## 1.1 Общие характеристики проведённой работы

2

13/9/2016 - 30/9/2016 .

- ,

45

12.18

35

35%

## 2.

### 2.1.

	-	.	%
" 3"	45	12.18	35%
	214	13.36	38%
" "	5371	13.04	37%
	7447	13.87	40%

### 2.2.

	-	.	%
11	18	11.50	33%
11	27	12.63	36%
" 3"	45	12.18	35%

### 3.1.

%

		.% .
5.4	.	55%
3.0		41%
4.0		40%
5.0		40%
1.0		38%
2.0		37%
5.1		34%
5.10	.	34%
5.11		34%
5.12		34%
5.13	( )	34%
5.14	,	34%
5.15		34%
5.16		34%
5.17		34%
5.18	,	34%
5.19		34%
5.2	.	34%
5.20	.	34%
5.3		34%
5.5		34%
5.6	.	34%

5.7	-	34%
5.8		34%
5.9	.	34%
4.1		32%
4.10		32%
4.11		32%
4.12		32%
4.13		32%
4.2	,	32%
4.3		32%
4.4		32%
4.5	,	32%
4.6		32%
4.7		32%
4.8		32%
4.9		32%
2.4	.	18%
4.14		13%
4.15		13%

### 3.1.1.

		11	11
1.0		38%	37%
2.0		39%	37%
2.4		25%	15%
3.0		43%	40%
4.0		43%	39%
4.1		30%	34%
4.2		30%	34%
4.3		30%	34%
4.4		30%	34%
4.5		30%	34%
4.6		30%	34%
4.7		30%	34%
4.8		30%	34%
4.9		30%	34%
4.10		30%	34%
4.11		30%	34%
4.12		30%	34%
4.13		30%	34%
4.14		9%	17%
4.15		9%	17%
5.0		43%	39%
5.1		36%	34%
5.2		36%	34%
5.3		36%	34%
5.4		43%	64%
5.5		36%	34%
5.6		36%	34%

### 3.1.1.

		11	11
5.7	-	36%	34%
5.8		36%	34%
5.9	.	36%	34%
5.10	.	36%	34%
5.11		36%	34%
5.12		36%	34%
5.13	( )	36%	34%
5.14	,	36%	34%
5.15		36%	34%
5.16		36%	34%
5.17		36%	34%
5.18	,	36%	34%
5.19		36%	34%
5.20	.	36%	34%



3.2.

(%

),

		. % .
		<b>41%</b>
3.0		41%
		<b>38%</b>
1.0		38%
		<b>36%</b>
5.4		55%
5.0		40%
5.20		34%
5.19		34%
5.18		34%
5.17		34%
5.16		34%
5.15		34%
5.14		34%
5.13	( )	34%
5.12		34%
5.11		34%
5.10		34%
5.9		34%
5.8		34%
5.7		34%
5.6		34%
5.5		34%
5.3		34%

		. % .
5.2	.	34%
5.1		34%
		<b>35%</b>
2.0		37%
2.4	.	18%
		<b>32%</b>
4.0		40%
4.13		32%
4.12		32%
4.11		32%
4.10		32%
4.9		32%
4.8		32%
4.7		32%
4.6		32%
4.5	,	32%
4.4		32%
4.3		32%
4.2	,	32%
4.1		32%
4.15		13%
4.14		13%

**3.2.1.**

(% ),

			11	11
	1.0		38%	37%
	2.0		39%	37%
	2.4		25%	15%
	3.0		43%	40%
	4.0		43%	39%
	4.1		30%	34%
	4.2		30%	34%
	4.3		30%	34%
	4.4		30%	34%
	4.5		30%	34%
	4.6		30%	34%
	4.7		30%	34%
	4.8		30%	34%
	4.9		30%	34%
	4.10		30%	34%
	4.11		30%	34%
	4.12		30%	34%
	4.13		30%	34%
	4.14		9%	17%
4.15		9%	17%	
	5.0		43%	39%
	5.1		36%	34%
	5.2		36%	34%
	5.3		36%	34%
	5.4		43%	64%
	5.5		36%	34%
	5.6		36%	34%

			11	11
	5.7	-	36%	34%
	5.8		36%	34%
	5.9	.	36%	34%
	5.10	.	36%	34%
	5.11		36%	34%
	5.12		36%	34%
	5.13	( )	36%	34%
	5.14	,	36%	34%
	5.15		36%	34%
	5.16		36%	34%
	5.17		36%	34%
	5.18	,	36%	34%
	5.19		36%	34%
	5.20	.	36%	34%

**3.3.**

%

		. % .
2.1	), ( , , , ,	41%
1.1	/	40%
1.2	/	40%
1.3	/	40%
1.4	/	40%
1.5	/ ,	40%
1.6	/	40%
1.7	/ , ,	40%
1.8	/ -	40%
2.5	, ); ( , , - , ; , .) ; , ;	35%
2.9	-	32%
2.2	, ; -	27%

### 3.3.1.

		11	11
1.1	/	47%	36%
1.2	/	47%	36%
1.3	/	47%	36%
1.4	/	47%	36%
1.5	/	47%	36%
1.6	/	47%	36%
1.7	/	47%	36%
1.8	/	47%	36%
2.1	( , , , ),	33%	47%
2.2	;	23%	30%
2.5	( , , , - ); ( , , - ); , ;	36%	35%
2.9	-	37%	30%

**3.4. (%, ),**

		.% .
/ :		40%
1.8	/ -	40%
1.7	/ , ,	40%
1.6	/	40%
1.5	/ ,	40%
1.4	/	40%
1.3	/	40%
1.2	/	40%
1.1	/	40%
:		34%
2.1	), ( , , ,	41%
2.5	, ); ( , , , - ; , ) ; ,	35%
2.9	-	32%
2.2	, ; -	27%

3.4.1.

(% ) ,

			11	11
/ :	1.1	/	47%	36%
	1.2	/	47%	36%
	1.3	/	47%	36%
	1.4	/	47%	36%
	1.5	/ ,	47%	36%
	1.6	/	47%	36%
	1.7	/ ,	47%	36%
	1.8	/ -	47%	36%
:	2.1	( , , , ),	33%	47%
	2.2	;	23%	30%
	2.5	( , , , , ); , - ( , , , , ); , ;	36%	35%
	2.9	-	37%	30%



## 4.

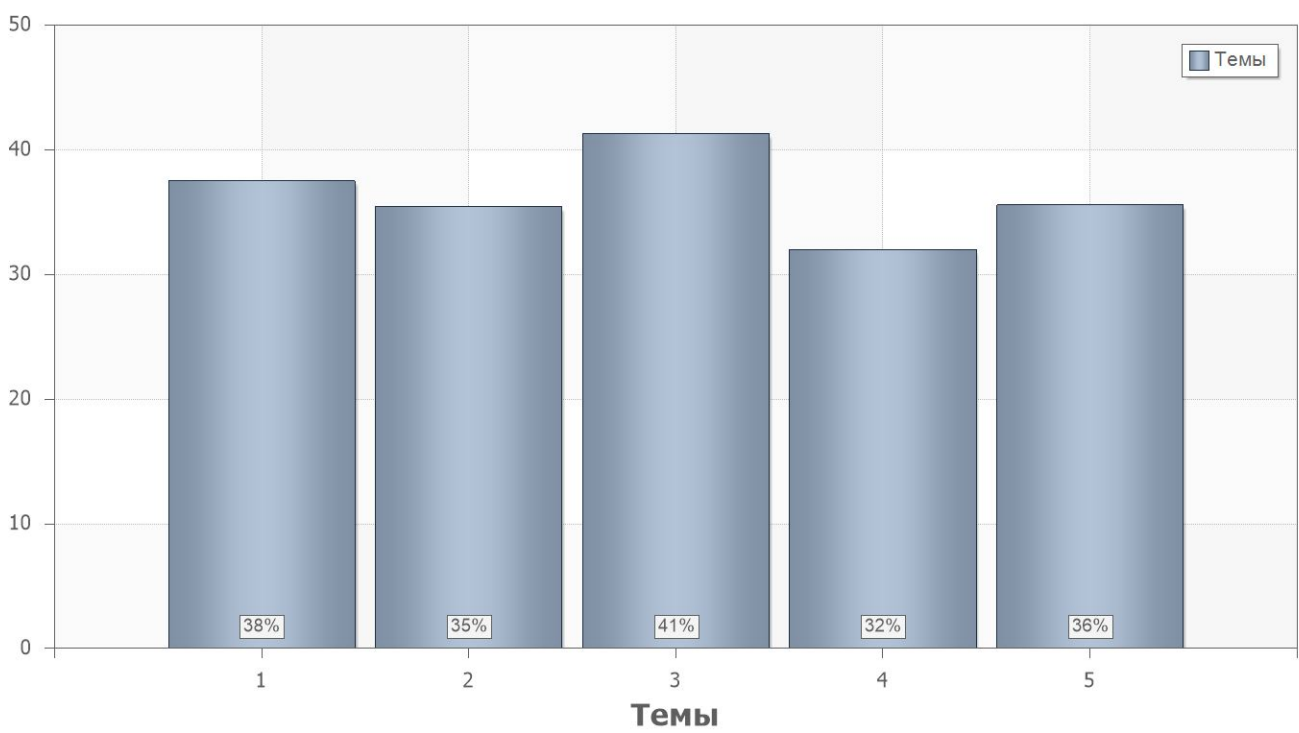
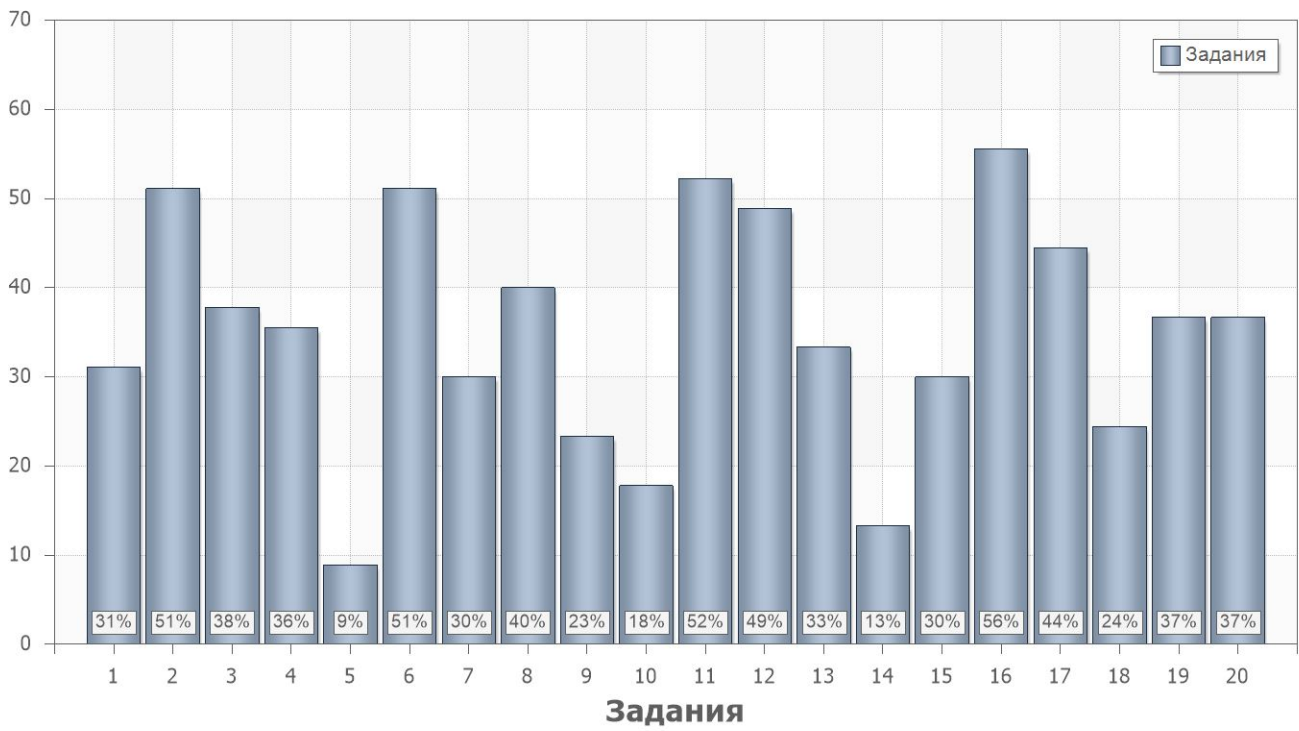
### 4.1.

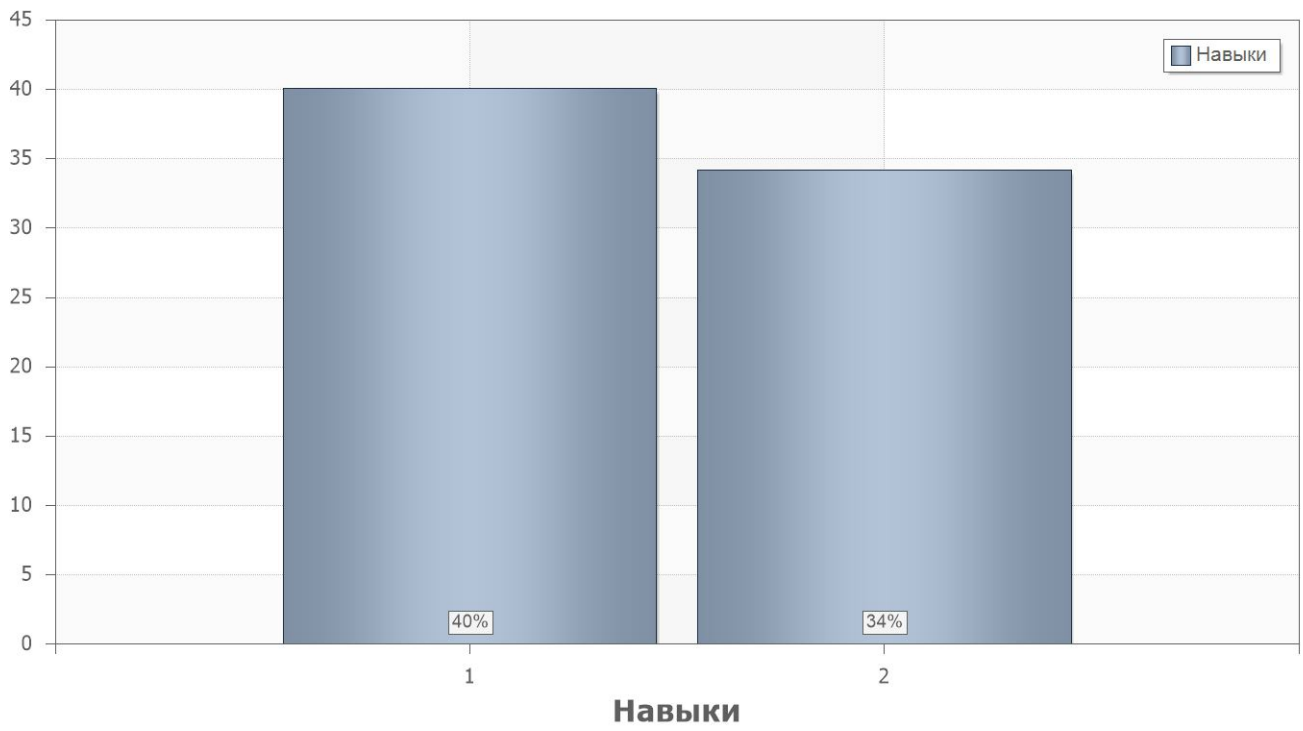
	. % .
2	34
1	35

### 4.2.

	. % .		
<b>1</b>			
1	31	1.0;2.0;3.0;4.0;5.0	1.1;1.2;1.3;1.4;1.5;1.6;1.7; 1.8
2	51	1.0;2.0;3.0;4.0;5.0	1.1;1.2;1.3;1.4;1.5;1.6;1.7; 1.8
3	38	1.0;2.0;3.0;4.0;5.0	1.1;1.2;1.3;1.4;1.5;1.6;1.7; 1.8
4	36	1.0	2.1
5	9	1.0	2.2
6	51	1.0	2.9
7	30	2.0	2.1
8	40	2.0	2.2
9	23	2.0	2.9
10	18	2.4	2.5
11	52	3.0	2.1
12	49	1.0;2.0;3.0;4.0;5.0	2.5
13	33	4.1;4.2;4.3;4.4;4.5;4.6;4.7; 4.8;4.9;4.10;4.11;4.12;4.13	2.1
14	13	4.14;4.15	2.2
15	30	4.1;4.2;4.3;4.4;4.5;4.6;4.7; 4.8;4.9;4.10;4.11;4.12;4.13	2.9
16	56	5.4	2.1

	. % .		
17	44	5.1;5.2;5.3;5.5;5.6;5.7;5.8; 5.9;5.10;5.11;5.12;5.13;5.1 4;5.15;5.16;5.17;5.18;5.19; 5.20	2.2
18	24	5.1;5.2;5.3;5.5;5.6;5.7;5.8; 5.9;5.10;5.11;5.12;5.13;5.1 4;5.15;5.16;5.17;5.18;5.19; 5.20	2.9
19	37	1.0;2.0;3.0;4.0;5.0	2.5
20	37	1.0;2.0;3.0;4.0;5.0	2.5





### 4.3.

Name	11	11
1	29%	40%
2	37%	32%

### 4.4.

PartIndex	Number	11	11
1	1	28%	33%
	2	56%	48%
	3	56%	26%
	4	25%	43%
	5	3%	13%
	6	58%	46%
	7	22%	35%
	8	39%	41%
	9	22%	24%
	10	22%	15%
	11	44%	57%
	12	44%	52%
	13	28%	37%
	14	8%	17%
	15	31%	30%
	16	44%	63%
	17	39%	48%
	18	33%	19%
	19	44%	31%
	20	31%	41%