

ABBYY®

1.				3
1.1.				3
2.				4
2.1.				4
2.2.				4
3.				5
3.1.				5
		%		5
3.1.1.				6
3.2.			(% ,)	7
3.2.1.			(% ,)	8
3.3.				9
		%		9
3.3.1.				10
3.4.			(% ,)	11
3.4.1.			(%)	12
	,			12
4.				14
4.1.				14
4.2.				14
4.3.				17
4.4.				17

1.

1.1 Общие характеристики проведённой работы

1

09/9/2016 - 30/9/2016 .

()

- ,

76

5.80

15

39%

2.

2.1.

	-	.	%
" 3"	76	5.80	39%
	382	7.34	49%
" "	10825	7.65	51%
	14951	7.78	52%

2.2.

	-	.	%
9	26	6.00	40%
9	23	5.61	37%
9	27	5.78	39%
" 3"	76	5.80	39%

3.1.

%

		.% .
6.0		50%
1.0		50%
8.0		49%
7.0		37%
3.0		37%
5.0		35%
2.0		16%

3.1.1.

	9	9	9
1.0	51%	41%	58%
2.0	19%	9%	19%
3.0	31%	32%	47%
5.0	31%	47%	28%
6.0	48%	44%	60%
7.0	44%	36%	32%
8.0	48%	52%	48%

3.2.

(%

),

		. % .
		50%
6.0		50%
		50%
1.0		50%
		49%
8.0		49%
		37%
7.0		37%
		37%
3.0		37%
		35%
5.0		35%
		16%
2.0		16%

3.2.1.

(%),

			9	9	9
	1.0		51%	41%	58%
	2.0		19%	9%	19%
	3.0		31%	32%	47%
	5.0		31%	47%	28%
	6.0		48%	44%	60%
	7.0		44%	36%	32%
	8.0		48%	52%	48%

3.3.**%**

		.% .
1.0		61%
7.0	,	41%
3.0	,	40%
5.0	,	37%
4.0		35%
7.8	,	28%
2.0		5%

3.3.1.

		9	9	9
1.0		59%	59%	64%
2.0		12%	0%	3%
3.0		29%	45%	48%
4.0		31%	47%	28%
5.0		43%	35%	32%
7.0		42%	35%	44%
7.8		35%	25%	23%

3.4.**(%****),**

		. % .
		61%
1.0		61%
	,	40%
3.0	,	40%
	,	38%
7.0	,	41%
7.8	,	28%
	,	37%
5.0	,	37%
		35%
4.0		35%
		5%
2.0		5%

3.4.1.

(%) ,

			9	9	9
	1.0		59%	59%	64%
	2.0		12%	0%	3%
,	3.0	,	29%	45%	48%
	4.0		31%	47%	28%
	5.0	,	43%	35%	32%
	7.0	,	42%	35%	44%

	7.8		35%	25%	23%
--	-----	--	-----	-----	-----

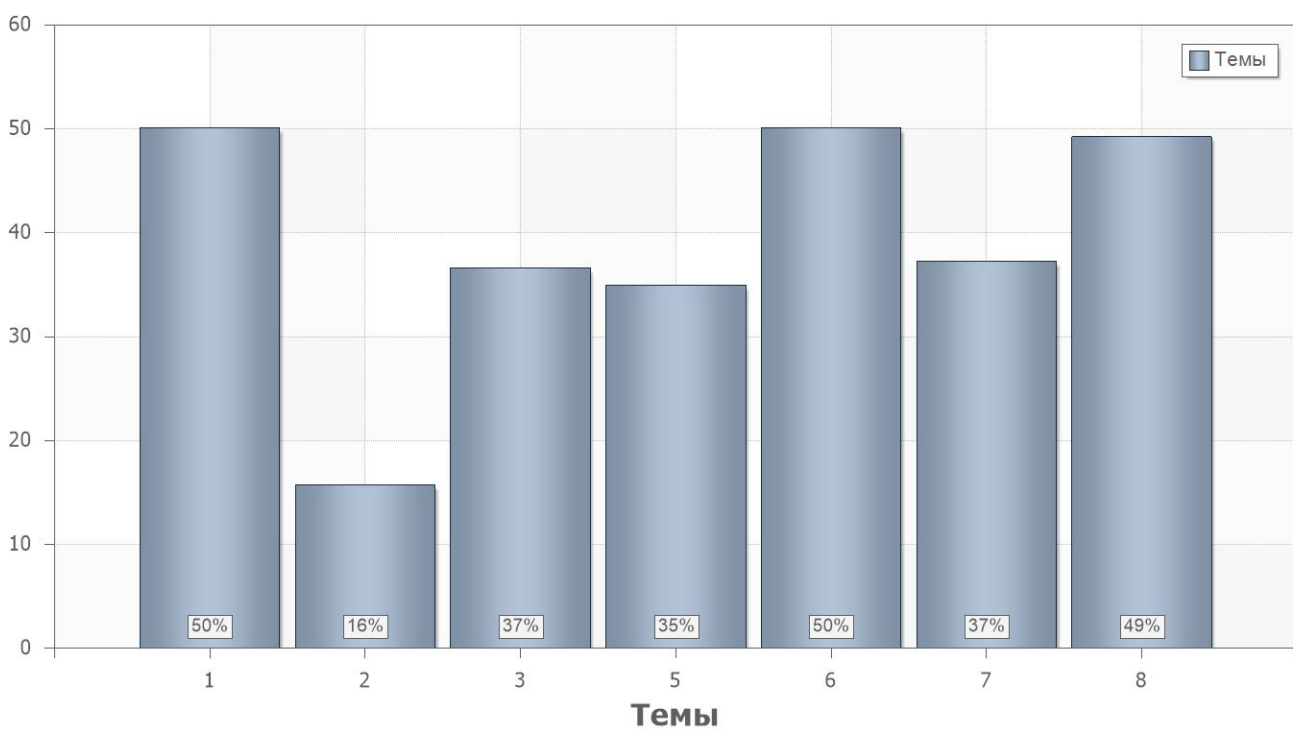
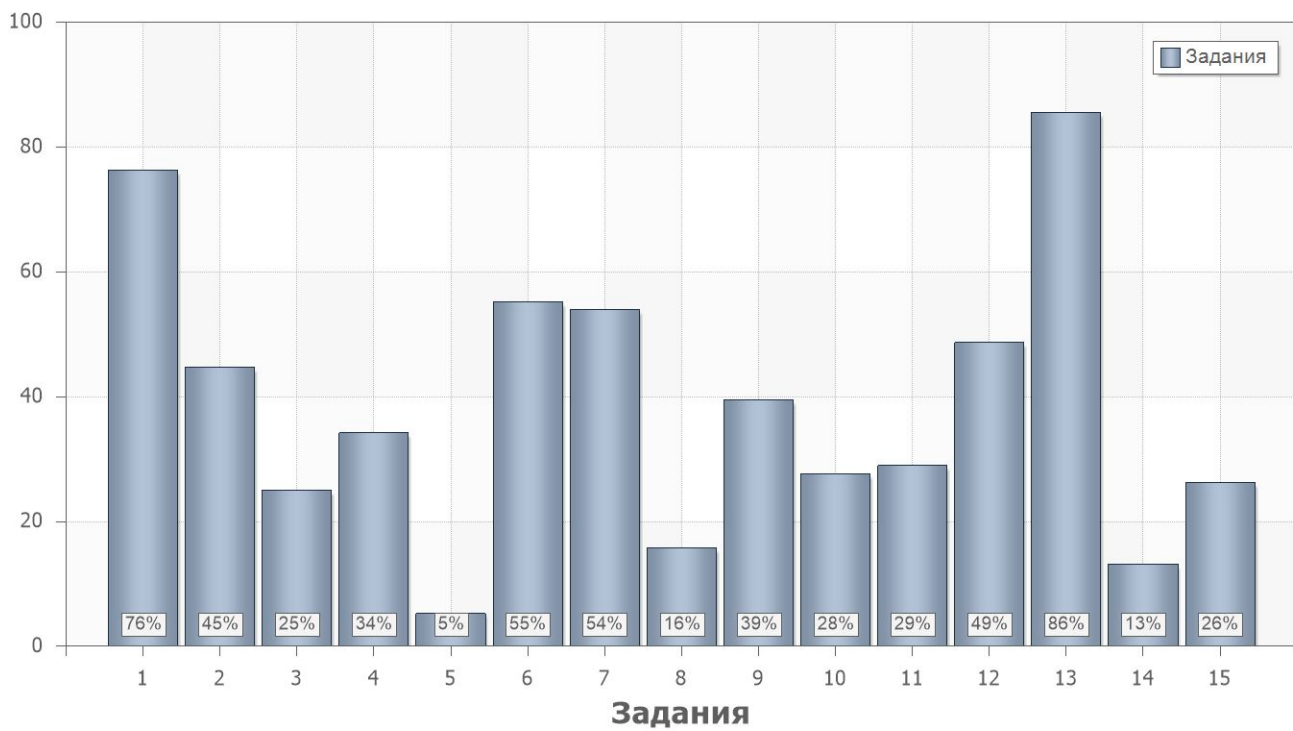
4.

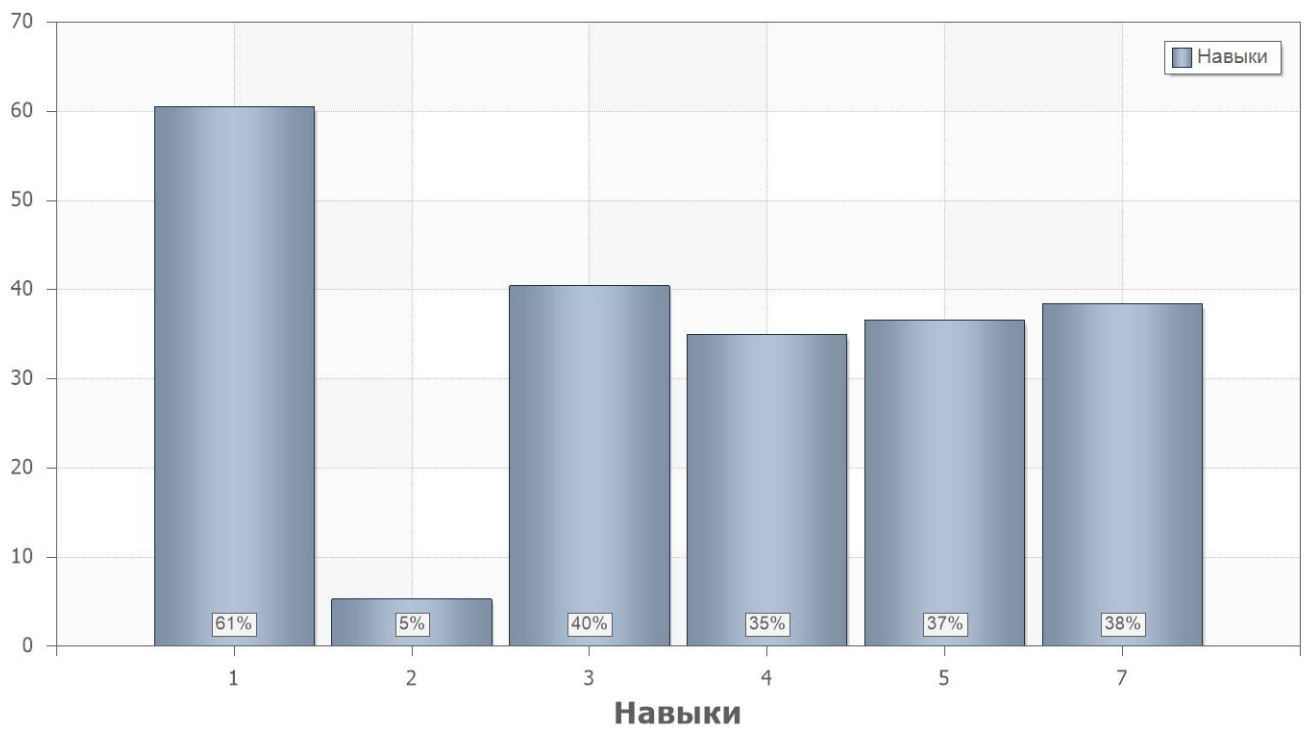
4.1.

	. % .
2	36
1	41

4.2.

	. % .		
1			
1	76	1.0	1.0
2	45	1.0;6.0	1.0
3	25	3.0	3.0
4	34	5.0	4.0
5	5	2.0	2.0
6	55	3.0;6.0	3.0
7	54	7.0	5.0
8	16	7.0	5.0
9	39	7.0	5.0
10	28	7.0	7.8
11	29	1.0;3.0	7.0
12	49	7.0	7.0
13	86	8.0	7.0
14	13	8.0	7.0
15	26	2.0	7.0





4.3.

Name	9	9	9
1	37%	40%	48%
2	43%	35%	31%

4.4.

PartIndex	Number	9	9	9
1	1	65%	83%	81%
	2	54%	35%	44%
	3	15%	39%	22%
	4	31%	48%	26%
	5	12%	0%	4%
	6	42%	52%	70%
	7	58%	48%	56%
	8	23%	9%	15%
	9	50%	48%	22%
	10	35%	26%	22%
	11	35%	4%	44%
	12	58%	48%	41%
	13	81%	87%	89%
	14	15%	17%	7%
	15	27%	17%	33%