

ABBYY®

1.				3
1.1.				3
2.				4
2.1.				4
2.2.				4
3.				5
3.1.				5
		%		5
3.1.1.				6
3.2.			(% ,)	7
3.2.1.			(% ,)	9
3.3.				10
		%		10
3.3.1.				11
3.4.			(% ,)	12
3.4.1.			(%)	14
	,			14
4.				16
4.1.				16
4.2.				16
4.3.				19
4.4.				19

1.

1.1 Общие характеристики проведённой работы

2

09/9/2016 - 30/9/2016 .

()

- ,

47

10.13

15

68%

2.

2.1.

	-	.	%
" 3"	47	10.13	68%
	283	10.68	71%
" "	5947	10.29	69%
	8401	10.73	72%

2.2.

	-	.	%
11	20	10.90	73%
11	27	9.56	64%
" 3"	47	10.13	68%

3.1.

%

		.% .
3.1.3	.	85%
6.2.1		85%
3.2.1	.	85%
3.2.6		85%
1.4.2	,	79%
1.1.4		79%
1.1.3	, ,	77%
5.1.1		77%
1.1.1		76%
6.3.1		75%
1.1.5	n > 1	75%
1.4.3	,	75%
5.5.1	, ,	61%
2.1.12	. ,	57%
5.5.3	, , ,	55%
1.4.1	,	36%
5.1.4		32%

3.1.1.

		11	11
1.1.1		85%	69%
1.1.3		84%	72%
1.1.4		86%	74%
1.1.5	n > 1	75%	74%
1.4.1		30%	41%
1.4.2		88%	73%
1.4.3		75%	74%
2.1.12		57%	56%
3.1.3		92%	80%
3.2.1		90%	81%
3.2.6		90%	81%
5.1.1		85%	71%
5.1.4		66%	7%
5.5.1		52%	67%
5.5.3		76%	39%
6.2.1		86%	84%
6.3.1		85%	67%

3.2.

(%

),

		. % .
		85%
3.1.3	.	85%
		85%
6.2.1		85%
		85%
3.2.6		85%
3.2.1	.	85%
,		77%
1.1.4		79%
1.1.3	, ,	77%
1.1.1		76%
1.1.5	n > 1	75%
		75%
6.3.1		75%
		62%
1.4.2	,	79%
1.4.3	,	75%
1.4.1	,	36%
		57%
2.1.12	.	57%
		57%
5.5.1	, ,	61%
5.5.3	, , ,	55%

		.% .
		55%
5.1.1		77%
5.1.4		32%

3.2.1.

(%),

			11	11
,	1.1.1		85%	69%
	1.1.3	,	84%	72%
	1.1.4		86%	74%
	1.1.5	n > 1	75%	74%
	1.4.1	,	30%	41%
	1.4.2	,	88%	73%
	1.4.3	,	75%	74%
	2.1.12	,	57%	56%
	3.1.3		92%	80%
	3.2.1	.	90%	81%
	3.2.6		90%	81%
	5.1.1		85%	71%
	5.1.4		66%	7%
	5.5.1	,	52%	67%
	5.5.3	,	76%	39%
	6.2.1		86%	84%
	6.3.1		85%	67%

3.3.

%

		. % .
6.2	;	85%
3.3	,	85%
6.3	;	79%
1.1	;	78%
6.1	;	77%
5.2	;	77%
5.4	,	75%
5.3	,	72%
4.1	(, ,)	57%
5.1	;	47%

3.3.1.

		11	11
1.1	;	82%	75%
3.3	,	90%	81%
4.1	(, ,)	68%	48%
5.1	;	48%	47%
5.2	;	85%	71%
5.3	,	57%	82%
5.4	,	85%	67%
6.1	;	79%	76%
6.2	;	92%	80%
6.3	,	80%	78%

3.4. (%,),

		.% .
		85%
3.3	,	85%
		81%
6.2	; ,	85%
6.3	, ,	79%
6.1	; ;	77%
		78%
1.1	; ,	78%
		61%
5.2	, ;	77%
5.4	,	75%
5.3	, ,	72%
5.1	, ;	47%

		.% .
	,	57%
4.1	(, ,)	57%

3.4.1.

(%) ,

			11	11
	1.1	;	82%	75%
	3.3	,	90%	81%
	4.1	(, ,)	68%	48%
	5.1	;	48%	47%
	5.2	;	85%	71%
	5.3	,	57%	82%
	5.4	,	85%	67%
	6.1	;	79%	76%
	6.2	;	92%	80%

	6.3	, ' - ,	80%	78%
--	-----	---------	-----	-----

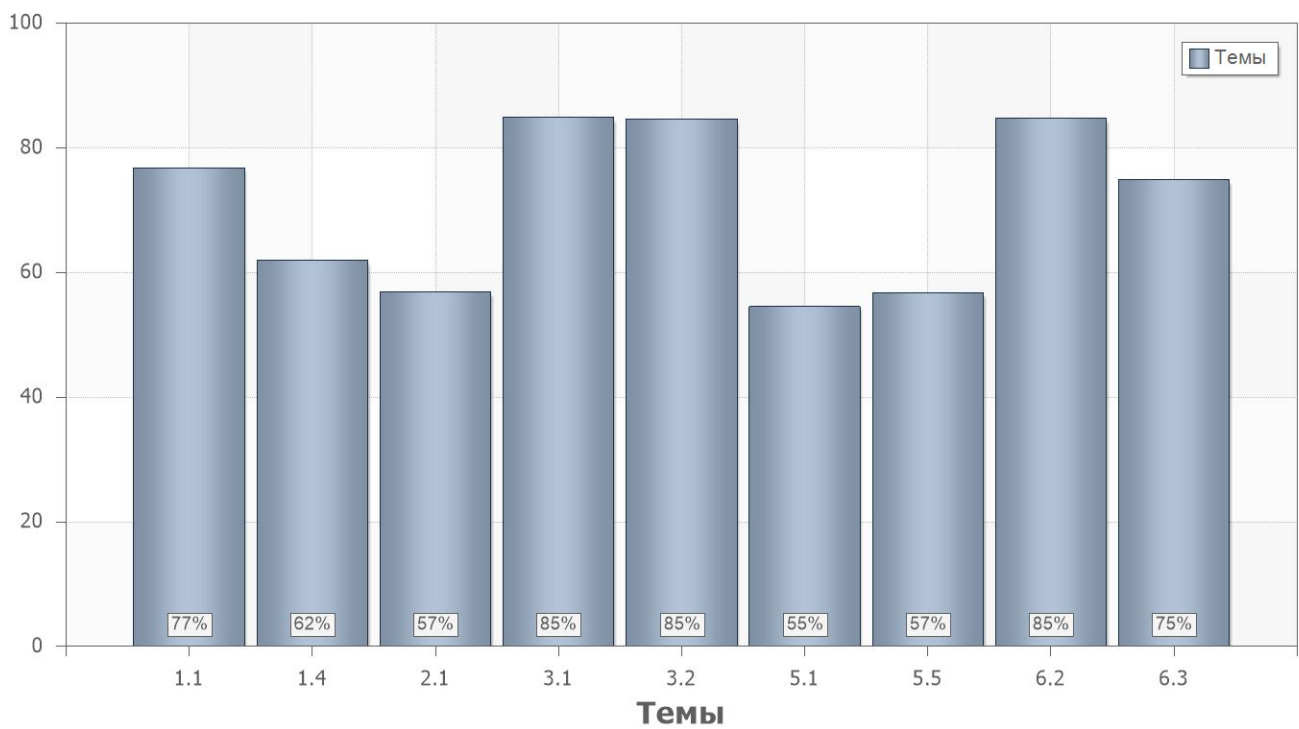
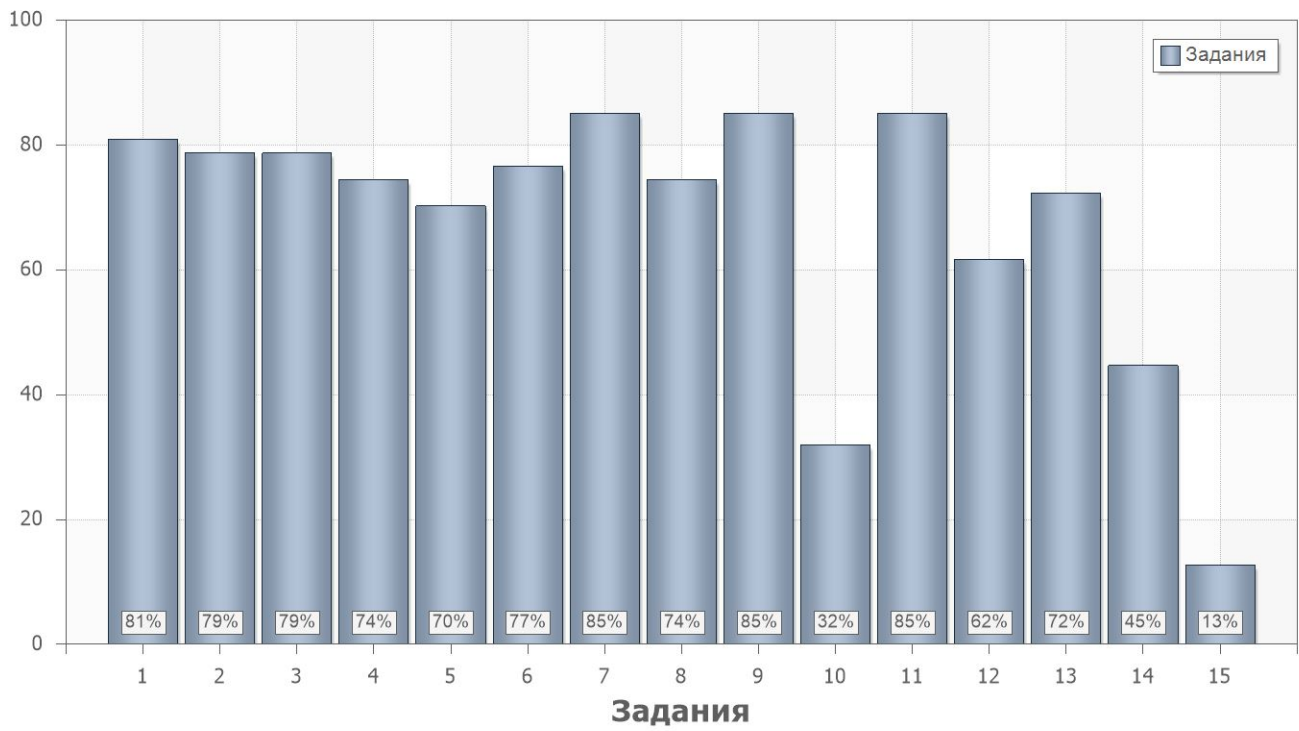
4.

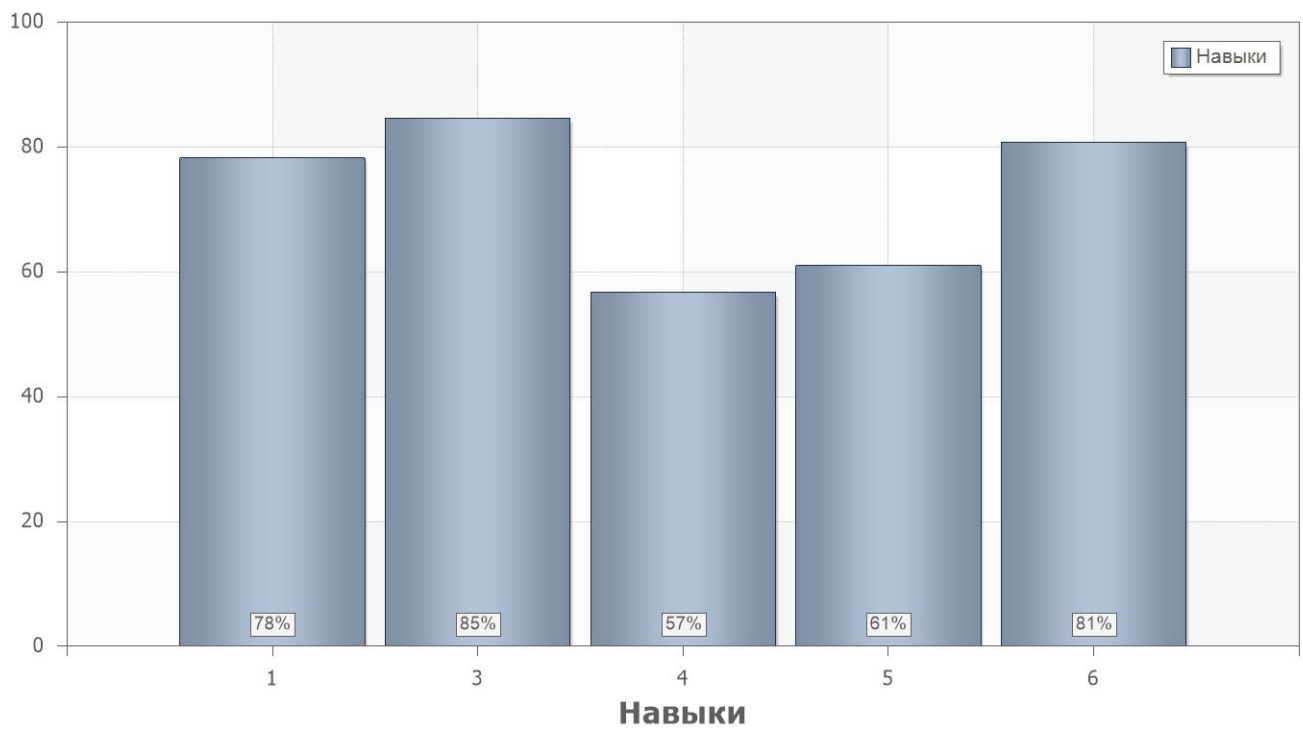
4.1.

	. % .
1	68
2	67

4.2.

	. % .		
1			
1	81	1.1.1;1.1.3;1.4.1	1.1
2	79	1.1.3;1.1.4;1.4.2	1.1
3	79	1.1.3	6.3
4	74	1.1.5;1.4.3	1.1
5	70	1.1.1;1.1.3;2.1.12	6.1
6	77	5.1.1;5.5.3	4.1;5.2
7	85	6.2.1;2.1.12	5.1;6.1
8	74	6.3.1	5.4
9	85	3.1.3;6.2.1	6.2
10	32	5.1.4;5.5.3	4.1
11	85	3.1.3;3.2.1;3.2.6;6.2.1	3.3;6.2
12	62	5.5.1	4.1
13	72	2.1.12	5.3
14	45	2.1.12	5.1
15	13	1.4.1;2.1.12	5.1





4.3.

Name	11	11
1	69%	67%
2	76%	61%

4.4.

PartIndex	Number	11	11
1	1	85%	78%
	2	85%	74%
	3	80%	78%
	4	75%	74%
	5	85%	59%
	6	85%	70%
	7	75%	93%
	8	85%	67%
	9	95%	78%
	10	65%	7%
	11	90%	81%
	12	55%	67%
	13	60%	81%
	14	65%	30%
	15	5%	19%